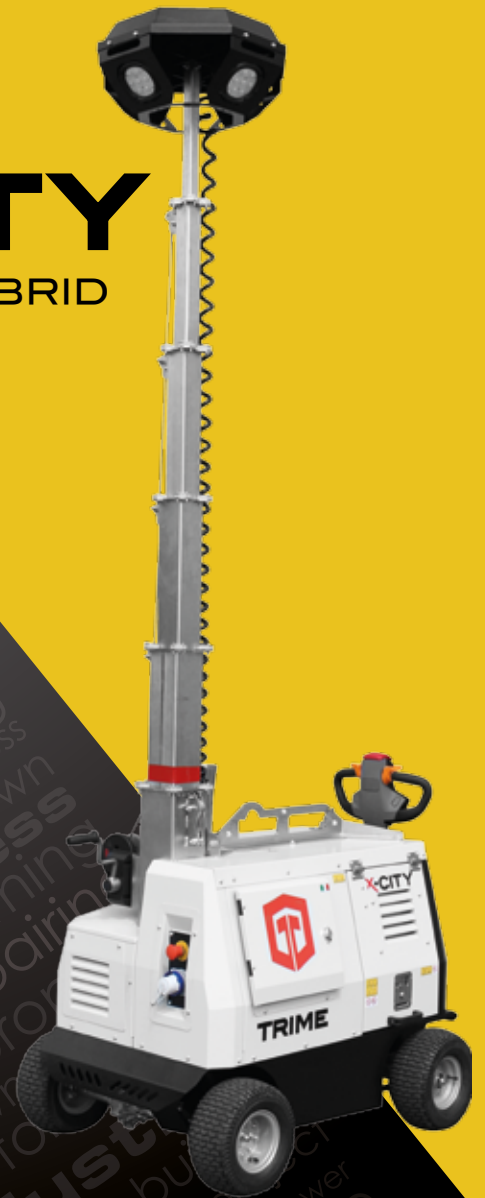


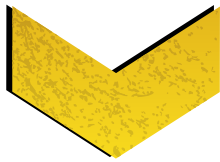
**genuine** spare parts  
fast moving items

**X-CITY**  
HYBRID



**TRIME**

Lighting Tower Specialist



# X-CITY HYBRID



### info contacts

+ 39 02 942 1724

info@trime.it

www.trime.it

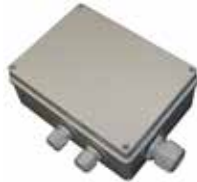
### Mast & Floodlights spare parts



LED Floodlight 150W



Anti-drag spacer



Junction box



Coiled cable



Mast winch



Angular runner



Angular runner reinforcement



Mast winch handle



Mast rope L.2400 mm full eyelet / free cable



Pulley D.58

Pulley D.62

Pulley D.60

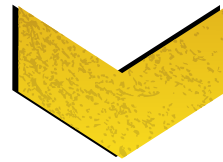
Pulley D.63

info contacts

+ 39 02 942 1724

info@trime.it

www.trime.it



**X-CITY**  
HYBRID

Engine spare parts



Battery charger regulator



Fuel filter



Fuel lift pump



Fuel pre-filter



Oil drain pipe kit



Anti-vibration buffer

Electrical spare parts



DSE3110 controller



Main circuit breaker 25A



Lamp switch



8 modules cover



Fuel level gauge



Battery charger gauge



Green signal lamp



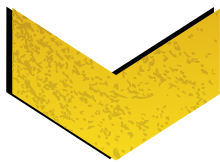
1 pole switch



Contactor switch



12V 30A relay



# X-CITY

4X160W LED



info contacts

+ 39 02 942 1724

info@trime.it

www.trime.it

## Electrical spare parts



Emergency stop button



Battery charger socket



Mains inlet 230V 16A



Engine battery



AGM Battery



Battery charger



Speed controller unit



Power contactor



Sensor



Joystick

## Chassis spare parts



Fuel tank cap



Fuel level indicator



Stabilizer lock pin



Handle with lock



Door hinger



Lockable lock



Handle



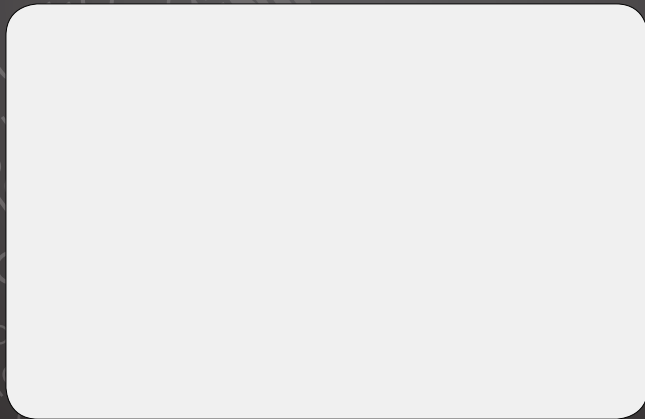
Control panel door hinger



Buffer



Wheel



# TRIME

Lighting Tower **Specialist**

**TRIME** s.p.a.

Strada per Robecco, snc

20081 Cassinetta di Lugagnano (MI) - ITALY

Tel. +39 02 942 1724

[www.trime.it](http://www.trime.it) - [info@trime.it](mailto:info@trime.it)